

Test Report

No. SDFS2007004157FF

Date: Jul.17, 2020

Page 1 of 6

GUANGDONG BOLLIYA METAL BUILDING MATERIALS CO.,LTD
 NO.9, XINGYE ROAD, YANYUAN INDUSTRY ZONE, XINGTAN TOWN, SHUNDE DISTRICT, FOSHAN CITY,
 GUANGDONG, CHINA

Sample Description : DOUBLE SHEETS ALUMINUM PANEL (DUAL-METAL)
 Product specification : 3MM

The above data and information was / were submitted and identified on behalf of the client. SGS is not responsible for the authenticity, integrity and results of the data and information and / or the validity of the conclusion. results apply to the sample as received.

SGS Ref No. : GZIN2006029327CM
 Sample Receiving Date : Jul.07, 2020
 Test Performing Date : Jul.07, 2020 to Jul.17, 2020

Test Result Summary

Test(s) Requested	Result(s)
EN 13501-1:2018 Fire classification of construction products and building elements -Part 1: Classification using data from reaction to fire tests	Classification: A2-s1, d0
Summary:	
1. For further details, please refer to the following page(s).	

Signed for and on behalf of
 Shunde Branch
 SGS-CSTC Co., Ltd.

Ada

scan to see the report



SDFS2007004157FF

Ada Liu
 Approved signatory



Unless otherwise agreed in writing, this document is issued by the Company subject to its General Conditions of Service printed overleaf, available on request or accessible at <http://www.sgs.com/en/Terms-and-Conditions.aspx> and, for electronic format documents, subject to Terms and Conditions for Electronic Documents at <http://www.sgs.com/en/Terms-and-Conditions/Terms-e-Documents.aspx>. Attention is drawn to the limitation of liability, indemnification and jurisdiction issues defined therein. Any holder of this document is advised that information contained hereon reflects the Company's findings at the time of its intervention only and within the limits of Client's instructions, if any. The Company's sole responsibility is to its Client and this document does not exonerate parties to a transaction from exercising all their rights and obligations under the transaction documents. This document cannot be reproduced except in full, without prior written approval of the Company. Any unauthorized alteration, forgery or falsification of the content or appearance of this document is unlawful and offenders may be prosecuted to the fullest extent of the law. Unless otherwise stated the results shown in this test report refer only to the sample(s) tested and such sample(s) are retained for 30 days only.

Attention: To check the authenticity of testing /inspection report & certificate, please contact us at telephone: (86-755) 8307 1443, or email: CN_Doccheck@sgs.com

11F1 Building, European Industrial Park, No.1 Shunde South Road, Wusha Section, Daliang Town, Shunde, Foshan, Guangdong, China 528333 t (86-757)22805888 f (86-757)22805858 www.sgs.com.cn
 中国·广东·佛山市顺德区大良街道办事处五沙顺和南路1号欧洲工业园一号楼首层 邮编: 528333 t (86-757)22805888 f (86-757)22805858 sgs.china@sgs.com

TESTS AND RESULTS

Test Conducted:

This test is conducted as per EN 13501-1:2018 Fire classification of construction products and building elements -Part 1: Classification using data from reaction to fire tests. And the test methods as following:

1. EN ISO 1716:2010 Reaction to fire tests for products -Determination of the gross heat of combustion. (Calorific Value)
2. EN 13823:2010+A1:2014 Reaction to fire tests for building products - Building products excluding floorings exposed to the thermal attack by a single burning item.

Mounting and fixing (For EN 13823:2010+A1:2014):

The specimen was tested free standing. Both wings were clamped at the top and the bottom.

Test Results:

Test method	Parameter	Number of tests	Results
EN ISO 1716:2010	The product as a whole ^e : -PCS (MJ/kg)	3	0.6
	Membrane ^d : -PCS (MJ/m ²)		2.2
	Coating ^b : -PCS (MJ/m ²)		0.5
	Aluminum board 1 ^a : -PCS (MJ/kg)		0*
	Aluminum board 2 ^a : -PCS (MJ/kg)		0*
EN 13823:2010+A1:2014	FIGRA _{0,2MJ} (W/s)	3	11.3
	FIGRA _{0,4MJ} (W/s)		11.3
	THR _{600s} (MJ)		1.5
	SMOGR (m ² /s ²)		1.1
	TSP _{600s} (m ²)		7.4
	LFS < edge of specimen		Yes
	Flaming particles or droplets within 600s (Yes/No); Combustion time, if any burning time: (≤10s / >10s)		No



Unless otherwise agreed in writing, this document is issued by the Company subject to its General Conditions of Service printed overleaf, available on request or accessible at <http://www.sgs.com/en/Terms-and-Conditions.aspx> and, for electronic format documents, subject to Terms and Conditions for Electronic Documents at <http://www.sgs.com/en/Terms-and-Conditions/Terms-e-Documents.aspx>. Attention is drawn to the limitation of liability, indemnification and jurisdiction issues defined therein. Any holder of this document is advised that information contained herein reflects the Company's findings at the time of its intervention only and within the limits of Client's instructions, if any. The Company's sole responsibility is to its Client and this document does not exonerate parties to a transaction from exercising all their rights and obligations under the transaction documents. This document cannot be reproduced except in full, without prior written approval of the Company. Any unauthorized alteration, forgery or falsification of the content or appearance of this document is unlawful and offenders may be prosecuted to the fullest extent of the law. Unless otherwise stated the results shown in this test report refer only to the sample(s) tested and such sample(s) are retained for 30 days only.

Attention: To check the authenticity of testing /inspection report & certificate, please contact us at telephone: (86-755) 8307 1443, or email: CN.Doccheck@sgs.com

11F11 Building, European Industrial Park, No.1 Shunhe South Road, Wusha Section, Dalang Town, Shunde, Foshan, Guangdong, China 528333 t (86-757)22805888 f (86-757)22805858 www.sgs.com.cn
 中国·广东·佛山市顺德区大良街道办事处五沙顺和南路1号欧洲工业园一号楼首层 邮编: 528333 t (86-757)22805888 f (86-757)22805858 sgs.china@sgs.com

Remark:

FIGRA-Fire growth rate index used for classification purposes [W/s]

For the classes A2 and B, FIGRA_{0.2MJ}

For the classes C and D, FIGRA_{0.4MJ}

LFS -Lateral flame spread [m]

THR_{600s}-Total heat release within 600 s [MJ]

SMOGRA -Smoke growth rate [m²/s²]

TSP_{600s} -Total smoke production within 600 s [m²]

PCS -gross heat of combustion [MJ/kg or MJ/m²]

*- Metallic components shall not be tested. Where metallic components are present, their gross heat of combustion shall be deemed to be zero.

Classification and direct field of application:

This classification has been carried out in accordance with EN 13501-1:2018.

Classification:

Fire behaviour		Smoke production			Flaming droplets
A2	—	s	1	,	d 0

Remark:

The classes with their corresponding fire performance are given in Table 1.

Reaction to fire classification is based on the 7-step scale of A1 to F, where A1 is good and F is bad

Statement:

The test results relate to the behaviour of the test specimens of a product under the particular conditions of the test; they are not intended to be the sole criterion for assessing the potential fire hazard of the product in use.

Warning:

This classification report does not represent type approval or certification of the product.

The test laboratory has, therefore, play no part in sampling the product for the test, although it holds appropriate references to the manufacturer's factory production control that is aimed to be relevant to the samples tested and that will provide for their traceability.



Unless otherwise agreed in writing, this document is issued by the Company subject to its General Conditions of Service printed overleaf, available on request or accessible at <http://www.sgs.com/en/Terms-and-Conditions.aspx> and, for electronic format documents, subject to Terms and Conditions for Electronic Documents at <http://www.sgs.com/en/Terms-and-Conditions/Terms-e-Documents.aspx>. Attention is drawn to the limitation of liability, indemnification and jurisdiction issues defined therein. Any holder of this document is advised that information contained herein reflects the Company's findings at the time of its intervention only and within the limits of Client's instructions, if any. The Company's sole responsibility is to its Client and this document does not exonerate parties to a transaction from exercising all their rights and obligations under the transaction documents. This document cannot be reproduced except in full, without prior written approval of the Company. Any unauthorized alteration, forgery or falsification of the content or appearance of this document is unlawful and offenders may be prosecuted to the fullest extent of the law. Unless otherwise stated the results shown in this test report refer only to the sample(s) tested and such sample(s) are retained for 30 days only.

Attention: To check the authenticity of testing /inspection report & certificate, please contact us at telephone: (86-755) 8307 1443, or email: CN.Doccheck@sgs.com

11F11 Building, European Industrial Park, No.1 Shunhe South Road, Wusha Section, Daliang Town, Shunde, Foshan, Guangdong, China 528333 t (86-757)22805888 f (86-757)22805858 www.sgs.com.cn
 中国·广东·佛山市顺德区大良街道办事处五沙顺和南路1号欧洲工业园一号楼首层 邮编: 528333 t (86-757)22805888 f (86-757)22805858 sgs.china@sgs.com

Table 1 — Classes of reaction to fire performance for construction products excluding floorings and linear pipe thermal insulation products.

Class	Test method(s)	Classification criteria	Additional classification
A1	EN ISO 1182 ^a and	$\Delta T \leq 30^{\circ}\text{C}$, and $\Delta m \leq 50\%$, and $t_f = 0$ (i.e. no sustained flaming)	-
	EN ISO 1716	$PCS \leq 2.0\text{MJ/kg}$ ^a and $PCS \leq 2.0\text{MJ/kg}$ ^{b,c} and $PCS \leq 1.4\text{MJ/m}^2$ ^d and $PCS \leq 2.0\text{MJ/kg}$ ^e	-
A2	EN ISO 1182 ^a or	and $\Delta T \leq 50^{\circ}\text{C}$, and $\Delta m \leq 50\%$, and $t_f \leq 20\text{ s}$	-
	EN ISO 1716		-
	EN 13823	$FIGRA \leq 120\text{W/s}$ and $LFS < \text{edge of specimen}$ and $THR_{600s} \leq 7.5\text{MJ}$	Smoke production ^f and Flaming droplets/particles ^g
B	EN 13823 and	$FIGRA \leq 120\text{W/s}$ and $LFS < \text{edge of specimen}$ and $THR_{600s} \leq 7.5\text{MJ}$	Smoke production ^f and Flaming droplets/particles ^g
	EN ISO 11925-2 ⁱ Exposure =30s	$F_s \leq 150\text{mm}$ within 60 s	
C	EN 13823 and	$FIGRA \leq 250\text{W/s}$ and $LFS < \text{edge of specimen}$ and $THR_{600s} \leq 15\text{MJ}$	Smoke production ^f and Flaming droplets/particles ^g
	EN ISO 11925-2 ⁱ Exposure=30s	$F_s \leq 150\text{mm}$ within 60 s	
D	EN 13823 and	$FIGRA \leq 750\text{W/s}$	Smoke production ^f and Flaming droplets/particles ^g
	EN ISO 11925-2 ⁱ Exposure=30s	$F_s \leq 150\text{mm}$ within 60 s	
E	EN ISO 11925-2 ⁱ Exposure =15s	$F_s \leq 150\text{mm}$ within 20 s	flaming droplets/particles ^h
F	EN ISO 11925-2 ⁱ Exposure =15s	$F_s > 150\text{mm}$ within 20 s	-

Unless otherwise agreed in writing, this document is issued by the Company subject to its General Conditions of Service printed overleaf, available on request or accessible at <http://www.sgs.com/en/Terms-and-Conditions.aspx> and, for electronic format documents, subject to Terms and Conditions for Electronic Documents at <http://www.sgs.com/en/Terms-and-Conditions/Terms-e-Documents.aspx>. Attention is drawn to the limitation of liability, indemnification and jurisdiction issues defined therein. Any holder of this document is advised that information contained hereon reflects the Company's findings at the time of its intervention only and within the limits of Client's instructions, if any. The Company's sole responsibility is to its Client and this document does not exonerate parties to a transaction from exercising all their rights and obligations under the transaction documents. This document cannot be reproduced except in full, without prior written approval of the Company. Any unauthorized alteration, forgery or falsification of the content or appearance of this document is unlawful and offenders may be prosecuted to the fullest extent of the law. Unless otherwise stated the results shown in this test report refer only to the sample(s) tested and such sample(s) are retained for 30 days only.

Attention: To check the authenticity of testing /inspection report & certificate, please contact us at telephone: (86-755) 8307 1443, or email: CN.Doccheck@sgs.com

11F1 Building, European Industrial Park, No.1 Shunde South Road, Wusha Section, Dalang Town, Shunde, Foshan, Guangdong, China 528333 t (86-757)22805888 f (86-757)22805858 www.sgs.com.cn
中国·广东·佛山市顺德区大良街道办事处五沙顺和南路1号欧洲工业园一号厂房首层 邮编: 528333 t (86-757)22805888 f (86-757)22805858 sgs.china@sgs.com



- ^a For homogeneous products and substantial components of non-homogeneous products.
^b For any external non-substantial component of non-homogeneous products.
^c Alternatively, any external non-substantial component having a PCS $\leq 2,0 \text{ MJ/m}^2$, provided that the product satisfies the following criteria of EN 13823: FIGRA $\leq 20 \text{ W/s}$, and LFS < edge of specimen, and THR_{600s} $\leq 4,0 \text{ MJ}$, and s1, and d0.
^d For any internal non-substantial component of non-homogeneous products.
^e For the product as a whole.
^f In the last phase of the development of the test procedure, modifications of the smoke measurement system have been introduced, the effect of which needs further investigation. This may result in a modification of the limit values and/or parameters for the evaluation of the smoke production.
- s1 = SMOGRA $\leq 30 \text{ m}^2/\text{s}^2$ and TSP_{600s} $\leq 50 \text{ m}^2$; s2 = SMOGRA $\leq 180 \text{ m}^2/\text{s}^2$ and TSP_{600s} $\leq 200 \text{ m}^2$; s3 = not s1 or s2
^g d0 = No flaming droplets/ particles in EN 13823 within 600 s;
d1 = no flaming droplets/ particles persisting longer than 10 s in EN 13823 within 600 s;
d2 = not d0 or d1.
Ignition of the paper in EN ISO 11925-2 results in a d2 classification.
^h Pass = no ignition of the paper (no classification);
Fail = ignition of the paper (d2 classification).
ⁱ Under conditions of surface flame attack and, if appropriate to the end-use application of the product, edge flame attack.

SAMPLE INFORMATION AND PICTURES

- Thickness of the test specimen: About 3.0 mm
Density of the test specimen: About 8.32 kg/m³
★Density of the membrane: 0.048 kg/m²
★Density of the coating: 0.031 kg/m²
★Density of the aluminum board 1: 1.365 kg/m²
★Density of the aluminum board 2: 6.345 kg/m²

The above data and information with ★ was / were submitted and identified on behalf of the client. SGS is not responsible for the authenticity, integrity and results of the data and information and / or the validity of the conclusion. results apply to the sample as received.



Before test (for EN 13823)



After test (for EN 13823)

Unless otherwise agreed in writing, this document is issued by the Company subject to its General Conditions of Service printed overleaf, available on request or accessible at <http://www.sgs.com/en/Terms-and-Conditions.aspx> and, for electronic format documents, subject to Terms and Conditions for Electronic Documents at <http://www.sgs.com/en/Terms-and-Conditions/Terms-e-Documents.aspx>. Attention is drawn to the limitation of liability, indemnification and jurisdiction issues defined therein. Any holder of this document is advised that information contained herein reflects the Company's findings at the time of its intervention only and within the limits of Client's instructions, if any. The Company's sole responsibility is to its Client and this document does not exonerate parties to a transaction from exercising all their rights and obligations under the transaction documents. This document cannot be reproduced except in full, without prior written approval of the Company. Any unauthorized alteration, forgery or falsification of the content or appearance of this document is unlawful and offenders may be prosecuted to the fullest extent of the law. Unless otherwise stated the results shown in this test report refer only to the sample(s) tested and such sample(s) are retained for 30 days only.

Attention: To check the authenticity of testing /inspection report & certificate, please contact us at telephone: (86-755) 8307 1443, or email: CN.Doccheck@sgs.com

11F, Building European Industrial Park, No.1 Shunhe South Road, Wusha Section, Dalang Town, Shunde Foshan, Guangdong China 528333 t (86-757)22805888 f (86-757)22805858 www.sgs.com.cn
中国·广东·佛山市顺德区大良街道办事处五沙顺和南路1号欧洲工业园一号楼首层 邮编: 528333 t (86-757)22805888 f (86-757)22805858 sgs.china@sgs.com

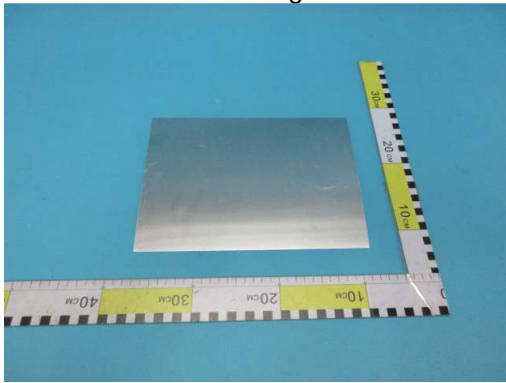




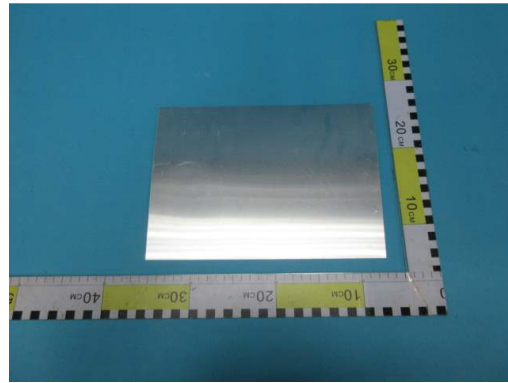
Coating



Membrane



Aluminum board 1



Aluminum board 2

*****End of Report*****



Unless otherwise agreed in writing, this document is issued by the Company subject to its General Conditions of Service printed overleaf, available on request or accessible at <http://www.sgs.com/en/Terms-and-Conditions.aspx> and, for electronic format documents, subject to Terms and Conditions for Electronic Documents at <http://www.sgs.com/en/Terms-and-Conditions/Terms-e-Documents.aspx>. Attention is drawn to the limitation of liability, indemnification and jurisdiction issues defined therein. Any holder of this document is advised that information contained hereon reflects the Company's findings at the time of its intervention only and within the limits of Client's instructions, if any. The Company's sole responsibility is to its Client and this document does not exonerate parties to a transaction from exercising all their rights and obligations under the transaction documents. This document cannot be reproduced except in full, without prior written approval of the Company. Any unauthorized alteration, forgery or falsification of the content or appearance of this document is unlawful and offenders may be prosecuted to the fullest extent of the law. Unless otherwise stated the results shown in this test report refer only to the sample(s) tested and such sample(s) are retained for 30 days only.

Attention: To check the authenticity of testing /inspection report & certificate, please contact us at telephone: (86-755) 8307 1443, or email: CN.Doccheck@sgs.com

1F/1st Building, European Industrial Park, No.1 Shunhe South Road, Wusha Section, Dalang Town, Shunde, Foshan, Guangdong, China 528333 t (86-757)22805888 f (86-757)22805858 www.sgsgroup.com.cn
 中国·广东·佛山市顺德区大良街道办事处五沙顺和南路1号欧洲工业园一号厂房首层 邮编: 528333 t (86-757)22805888 f (86-757)22805858 sgs.china@sgs.com